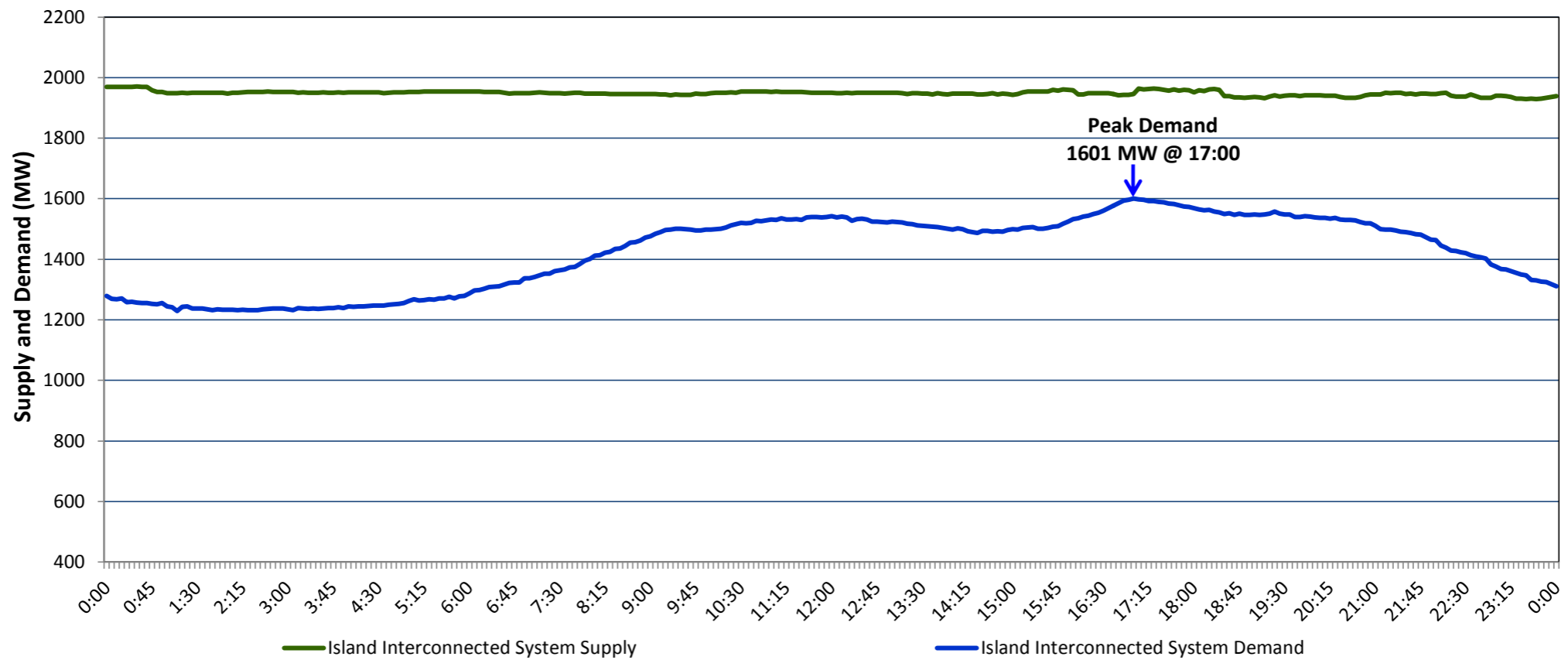


**Newfoundland Labrador Hydro (NLH)  
Supply and Demand Status Report Filed Monday, January 08, 2018**

**Section 1  
Island Interconnected System Supply and Demand  
Actual 24 Hour System Performance For Sunday, January 07, 2018**



**Supply Notes For January 07, 2018**

- A As of 1609 hours, December 31, 2017, Holyrood Unit 3 available at 130 MW (150 MW).
- B As of 0739 hours, January 03, 2018, Holyrood Unit 2 available at 154 MW (170 MW).
- C As of 2115 hours, January 04, 2017, Stephenville Gas Turbine available at 25 MW (50 MW).
- D As of 1313 hours, January 06, 2018, Holyrood Unit 1 available at 150 MW (170 MW).

**Section 2  
Island Interconnected Supply and Demand**

Mon, Jan 08, 2018	Island System Outlook <sup>3</sup>	Seven-Day Forecast	Temperature (°C)		Island System Daily Peak Demand (MW)	
			Morning	Evening	Forecast	Adjusted <sup>7</sup>
Available Island System Supply: <sup>5</sup>	1,920 MW	Monday, January 08, 2018	-8	-7	1,630	1,520
NLH Generation: <sup>4</sup>	1,615 MW	Tuesday, January 09, 2018	-7	0	1,560	1,451
NLH Power Purchases: <sup>6</sup>	125 MW	Wednesday, January 10, 2018	-4	-8	1,630	1,520
Other Island Generation:	180 MW	Thursday, January 11, 2018	-9	-5	1,605	1,495
Current St. John's Temperature:	-7 °C	Friday, January 12, 2018	2	6	1,355	1,248
Current St. John's Windchill:	-18 °C	Saturday, January 13, 2018	-1	-6	1,550	1,441
7-Day Island Peak Demand Forecast:	1,630 MW	Sunday, January 14, 2018	3	2	1,295	1,189

**Supply Notes For January 08, 2018**

- Notes:
1. Generation outages for running and corrective maintenance are included. These are not unusual for power system operations. They generally do not impact customer supply. The power system operators schedule outages to system equipment whenever possible to coincide with periods when customer demands are low and sufficient supply reserves are available. However, from time to time equipment outages are necessary and reserves may be impacted.
  2. Due to the Island Interconnected System being isolated from the larger North American grid, when there is a sudden loss of large generating units some customer's load must be interrupted for short periods to bring generation output equal to customer demand. This automatic action of power system protection, referred to as under frequency load shedding, is necessary to ensure the integrity and reliability of system equipment. Under frequency events typically occur 5 to 8 times per year on the Island Interconnected System and the resultant customer load interruptions are generally less than 30 minutes.
  3. As of 0800 Hours.
  4. Gross output including station service at Holyrood (24.5 MW) and improved NLH hydraulic output due to water levels (35 MW).
  5. Gross output from all Island sources (including Note 4).
  6. NLH Power Purchases include: CBPP Co-Gen, Nalcor Exploits, Rattle Brook, Star Lake, Wind Generation, Vale capacity assistance and Maritime Link Import (when applicable).
  7. Adjusted for CBP&P and Vale and Praxair interruptible load, the impact of voltage reduction and Maritime Link Exports (when applicable).

**Section 3  
Island Peak Demand Information  
Previous Day Actual Peak and Current Day Forecast Peak**

Sun, Jan 07, 2018	Actual Island Peak Demand <sup>8</sup>	17:00	1,601 MW
Mon, Jan 08, 2018	Forecast Island Peak Demand		1,630 MW

- Notes: 8. Island Demand is supplied by NLH generation and purchases, plus generation owned and operated by Newfoundland Power and Corner Brook Pulp & Paper (Deer Lake Power, DLP).